

Photos of Real Microscope Views of Bacterial Slides

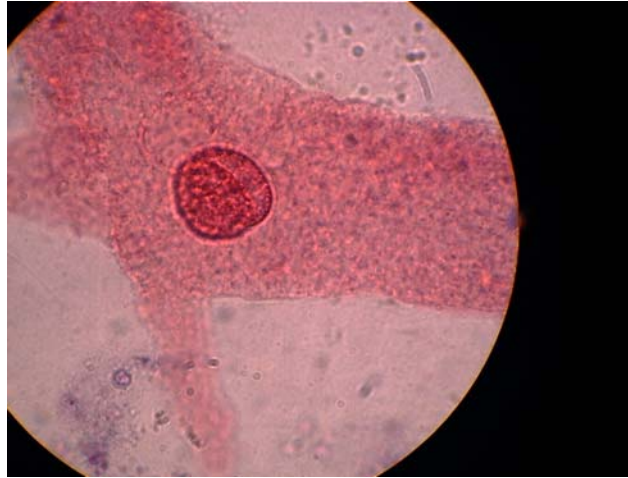
As you go through this presentation
ask yourself if these are in the domain
Bacteria or Eukarya

Amoeba proteus

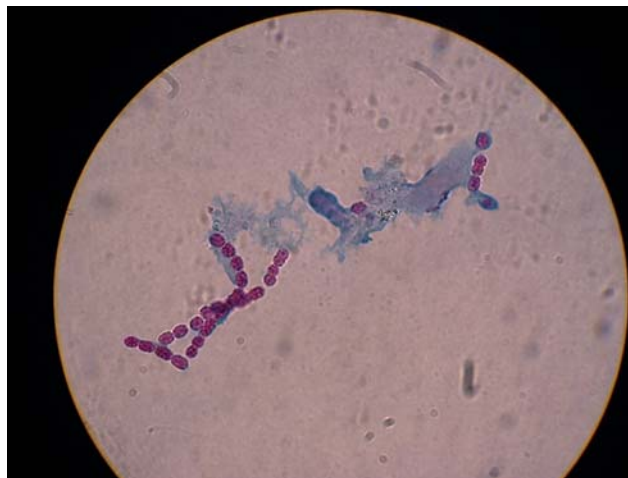
Is this a prokaryote or eukaryote?



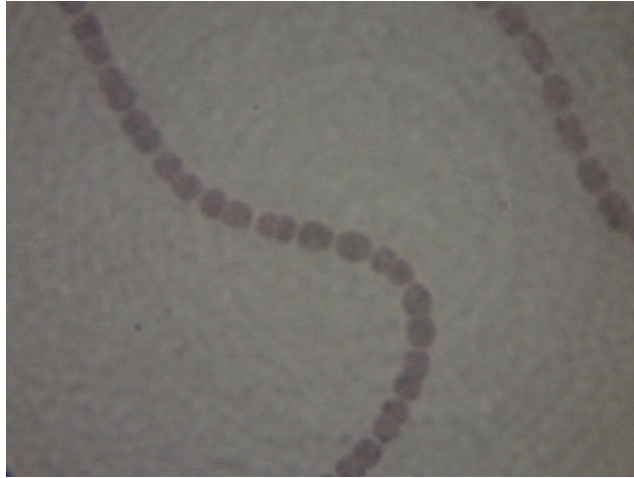
Amoeba proteus at a higher magnification



Nostoc slide



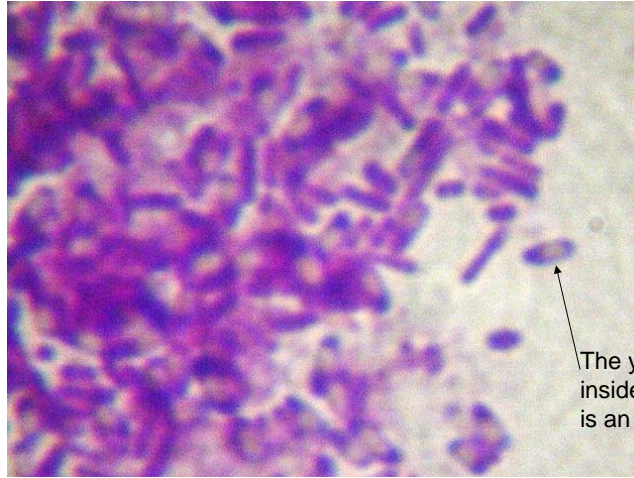
Nostoc at higher magnification



Bacillus anthracis an example of a
steptobacillus

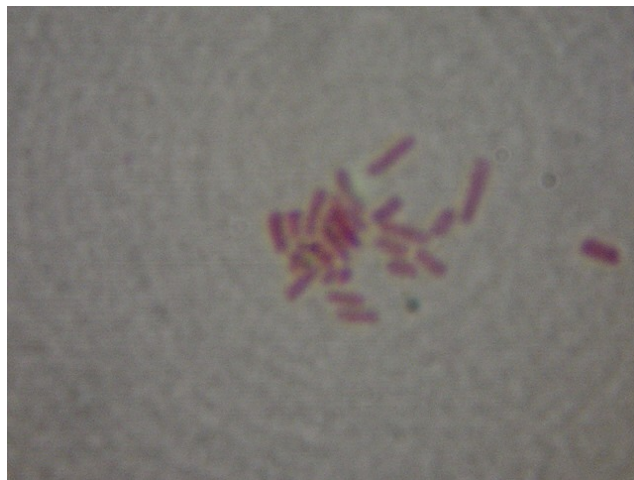


Bacillus subtilis with endospores



The yellow part
inside the bacillus
is an endospore

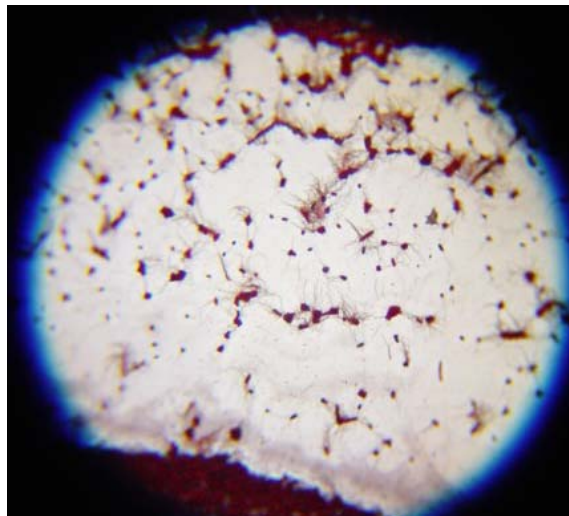
Bacillus cell shape



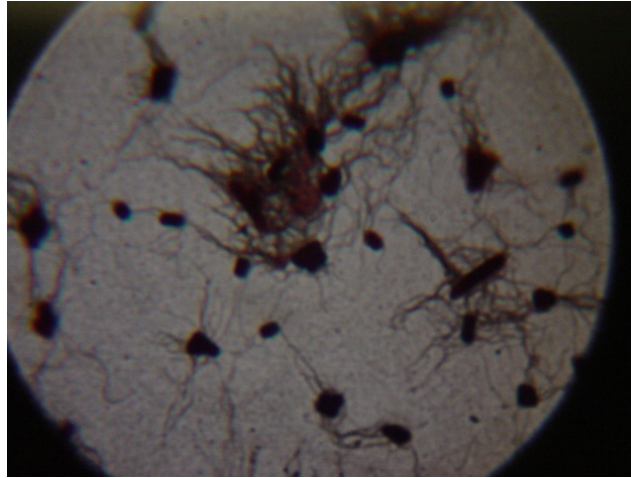
Bacillus cell shape



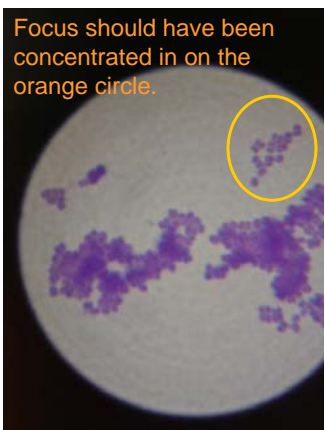
Bacillus with peritrichous flagella



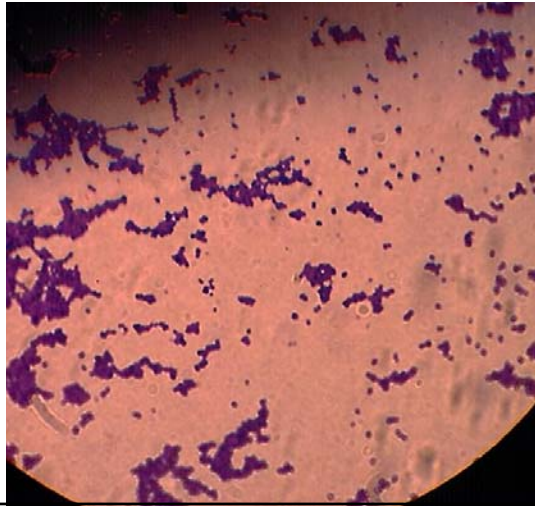
Bacillus with peritrichous flagella at a higher magnification



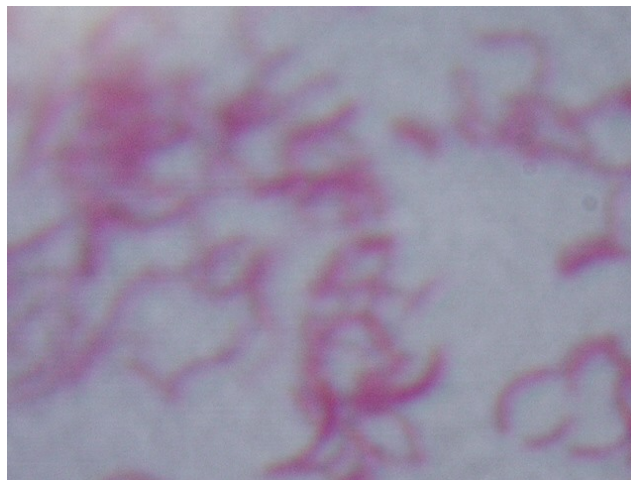
Large clumps of poorly focused cocci



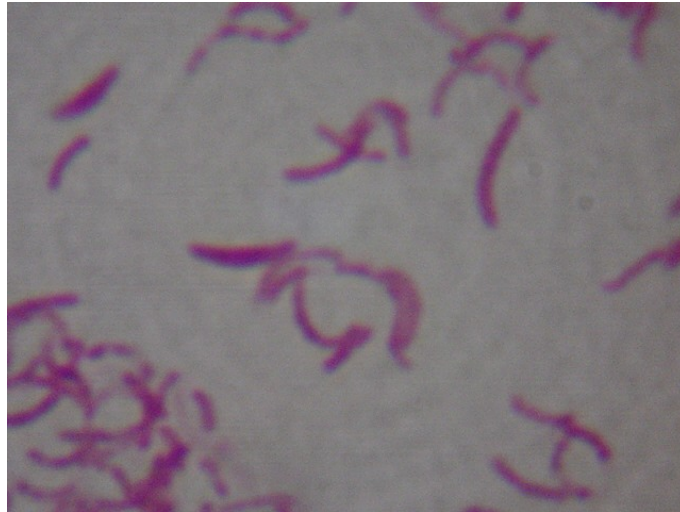
Micrococcus luteus better focus of cocci; remember cocci arrange into packets of four cells, called tetrads.



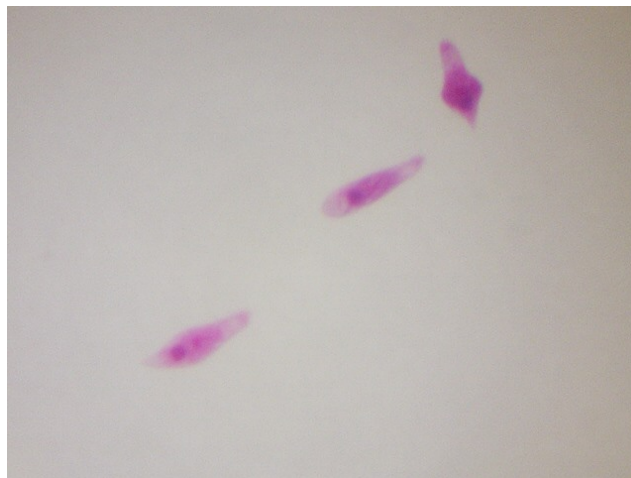
Poorly focused typical spirillum bacterial cell shape



Rhodospirillum rubrum
a spirillum cell shape



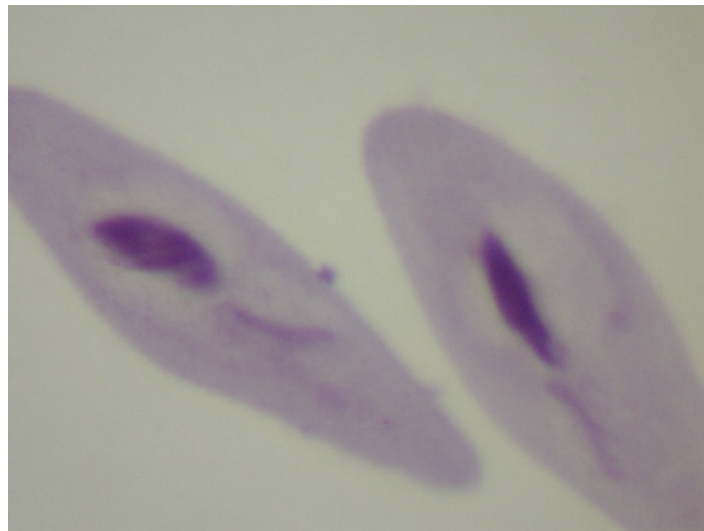
Euglena gracialis



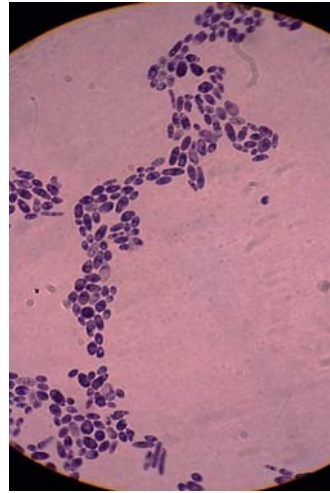
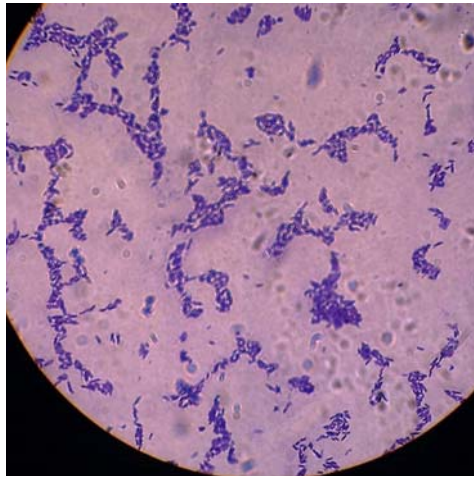
Paramecium caudatum



Paramecium caudatum



Saccharomyces cerevisiae



Saccharomyces cerevisiae

